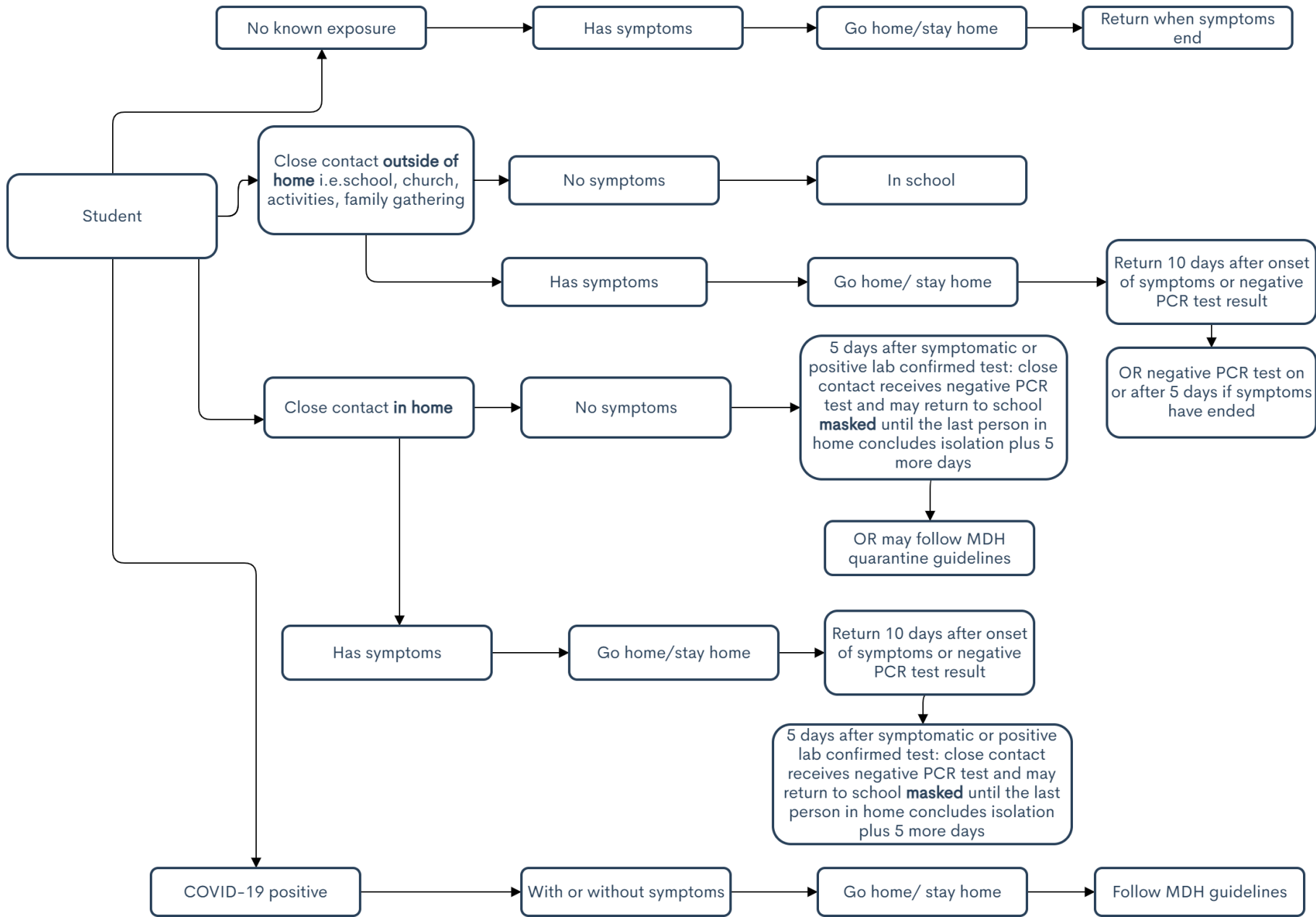


Health Guidelines – Our Savior’s Lutheran School



[MDH COVID-19 Decision Tree](#)

Your family may choose to follow the MDH Decision Tree in any instance and your children will not be counted as absent.

More common symptoms of COVID-19 are fever of 100.5 or higher, new cough or increasingly worse cough, difficulty breathing, new loss of taste or smell. Less common symptoms are sore throat, nausea, vomiting, diarrhea, chills, muscle pain, extreme fatigue, new severe/very bad headache, new nasal congestion or stuffy or runny nose.
 (Approved 9-18-21)